



MANAGEMENT OF RAILWAY SAFETY PERFORMANCE IN REPUBLIC OF SLOVENIA

ILCAD CONFERENCE
07.06.2018
ZAGREB, CROATIA

JOSIP ROTAR

KEY STAKEHOLDERS

- **Ministry of Infrastructure of the Republic of Slovenia**
- **Regulatory Body of the Republic of Slovenia**
- **European union Agency for Railways**
- **National Safety Authority (AŽP)**
- **National investigation Body**

KEY STAKEHOLDERS

- **Infrastructure Manager**

SŽ – Infrastruktura

- **Railway Undertakings (RU)**

SŽ – Potniški promet


SŽ – Tovorni promet

Rail Cargo Carrier

Adria Transport

Luka Koper

LEGAL BASIS

- **Regulation (EU) 2016/796**
On the European Union
Agency for Railways
 - **Directive (EU) 2004/49**
Railway Safety Directive
- 
- **Directive (EU) 2016/797**
On the interoperability
of the rail system within
the European Union
 - **Directive (EU) 2016/798**
On Railway Safety

LEGAL BASIS

- **Regulation (EU) 1158/2010**
CSM on Conformity
assessment
(safety certificates - RUs)
- **Regulation (EU) 1169/2010**
CSM on Conformity
assessment
(safety authorisation - IMs)
- **Regulation (EU) 1077/2010**
CSM for Supervision
(after issuing a safety certificate /
safety authorisation)

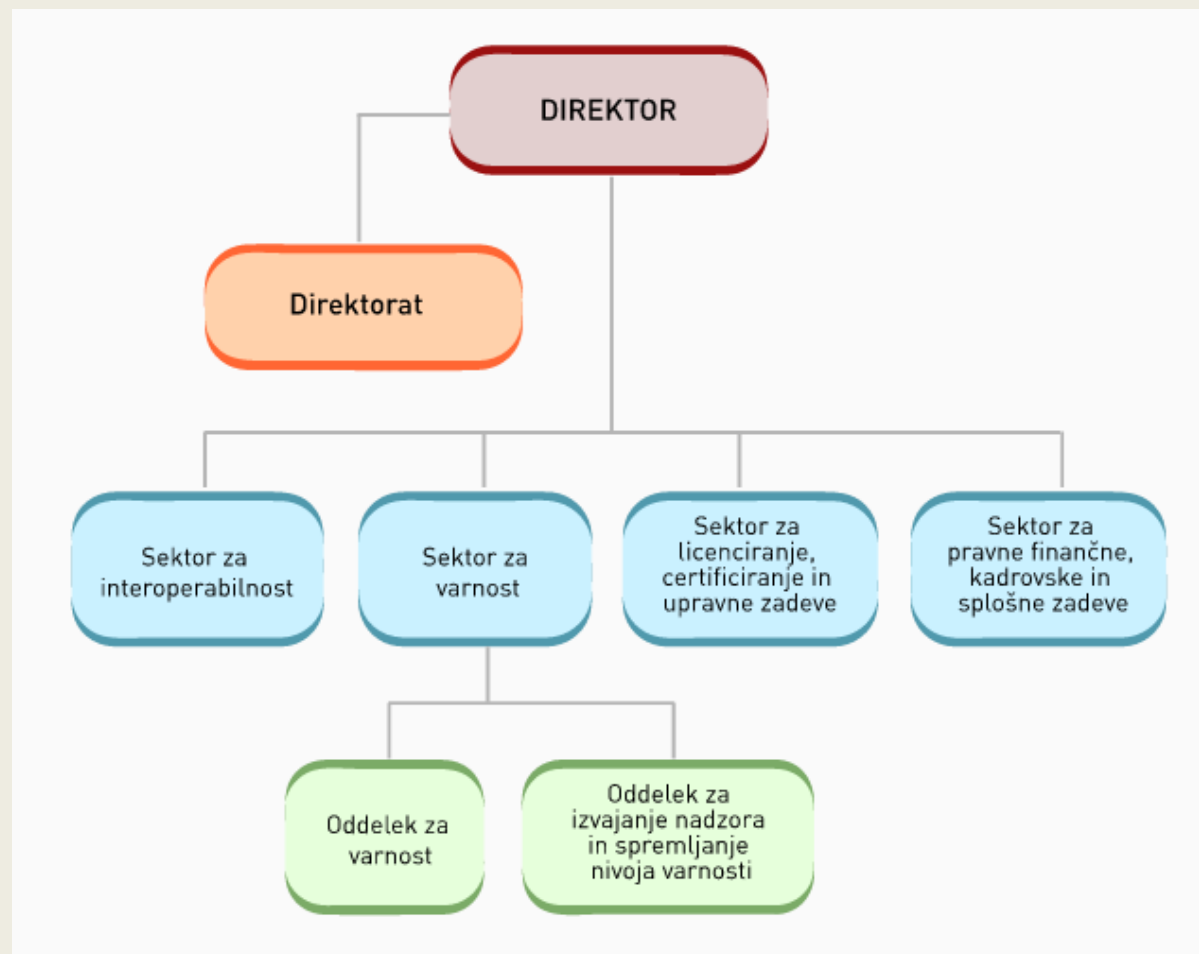
LEGAL BASIS

- **Railway Traffic Safety Act**
Zakon o varnosti v
železniškem prometu
(ZVZeIP)
- **Railway Transport Act**
Zakon o železniškem
prometu (ZZeIP)

ORGANISATIONAL STRUCTURE OF AŽP

- **Directorate**
- **Interoperability Division**
- **Safety Division**
- **Division for Licences, Certificates and Administrative Affairs**
- **Division for Legal, Financial, Personnel and General Affairs**

ORGANISATIONAL STRUCTURE OF AŽP



TASKS

- **Safety authority**
- **Certification body**
- **Licence body**
- **Conformity assessment body**
- **Assessment body on risk assessment**

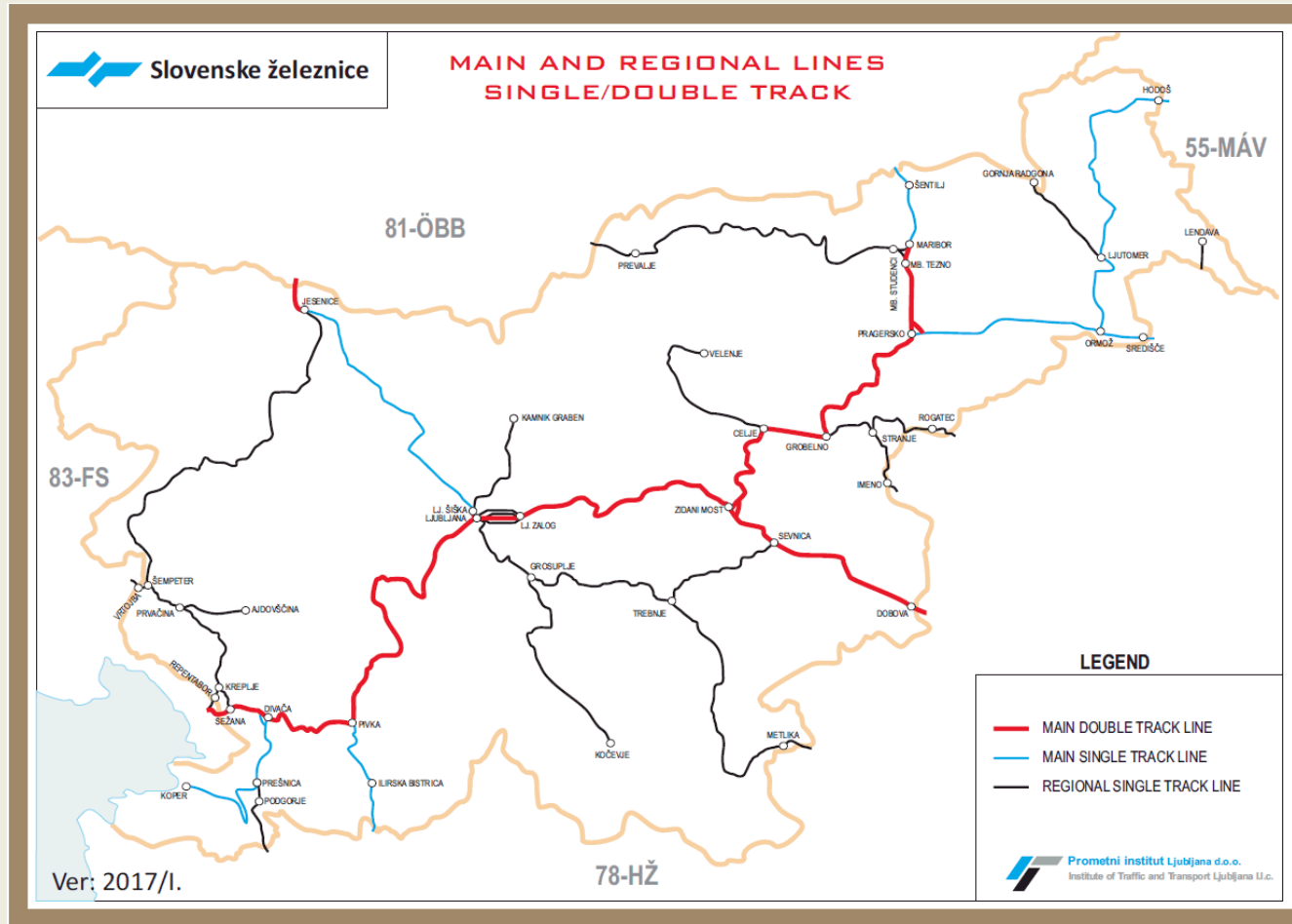
ADMINISTRATIVE ACTS

- **Safety certificates (RUs)**
Part A / Part B
Granting / renewal
Audits and supervisions
- **Safety authorization (IMs)**
Granting / renewal
Audits and supervisions
- **Maintainance entity certificate**
- **Train driver licences**
- **Authorization of education entities**
- **Authorization of workshops for railway vehicles maintainance**

RAILWAY SAFETY IN SLOVENIA

- **Number of significant accidents is decreasing**
- **Level crossings are main concern**
- **National safety strategy still not confirmed**

RAILWAY SAFETY IN SLOVENIA



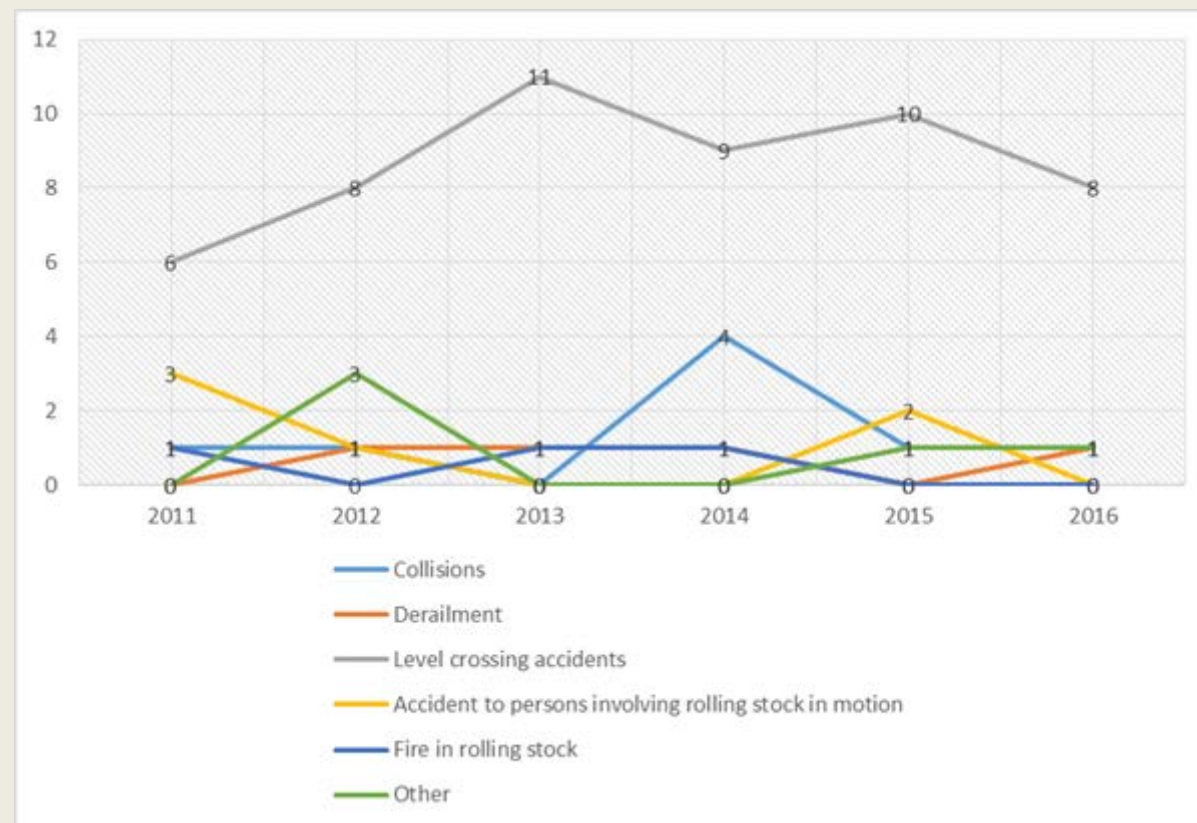
RAILWAY SAFETY IN SLOVENIA

Basic data on railway infrastructure

Lenght of lines	1207 km
Total number of train kilometers	21 million train km
Total number of level crossings (active and passive)	756
Active level crossings	322
Passive level crossings	434

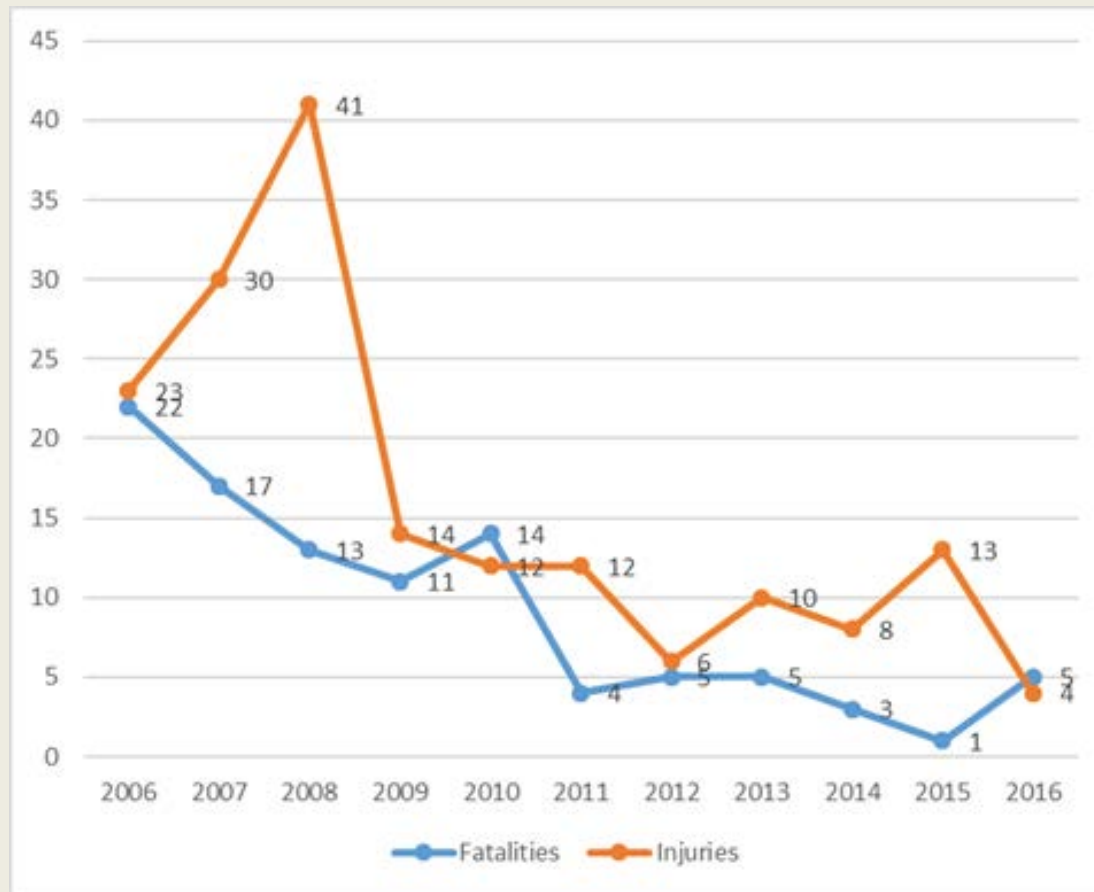
RAILWAY SAFETY IN SLOVENIA

Significant accidents



RAILWAY SAFETY IN SLOVENIA

Victims



RAILWAY SAFETY IN SLOVENIA

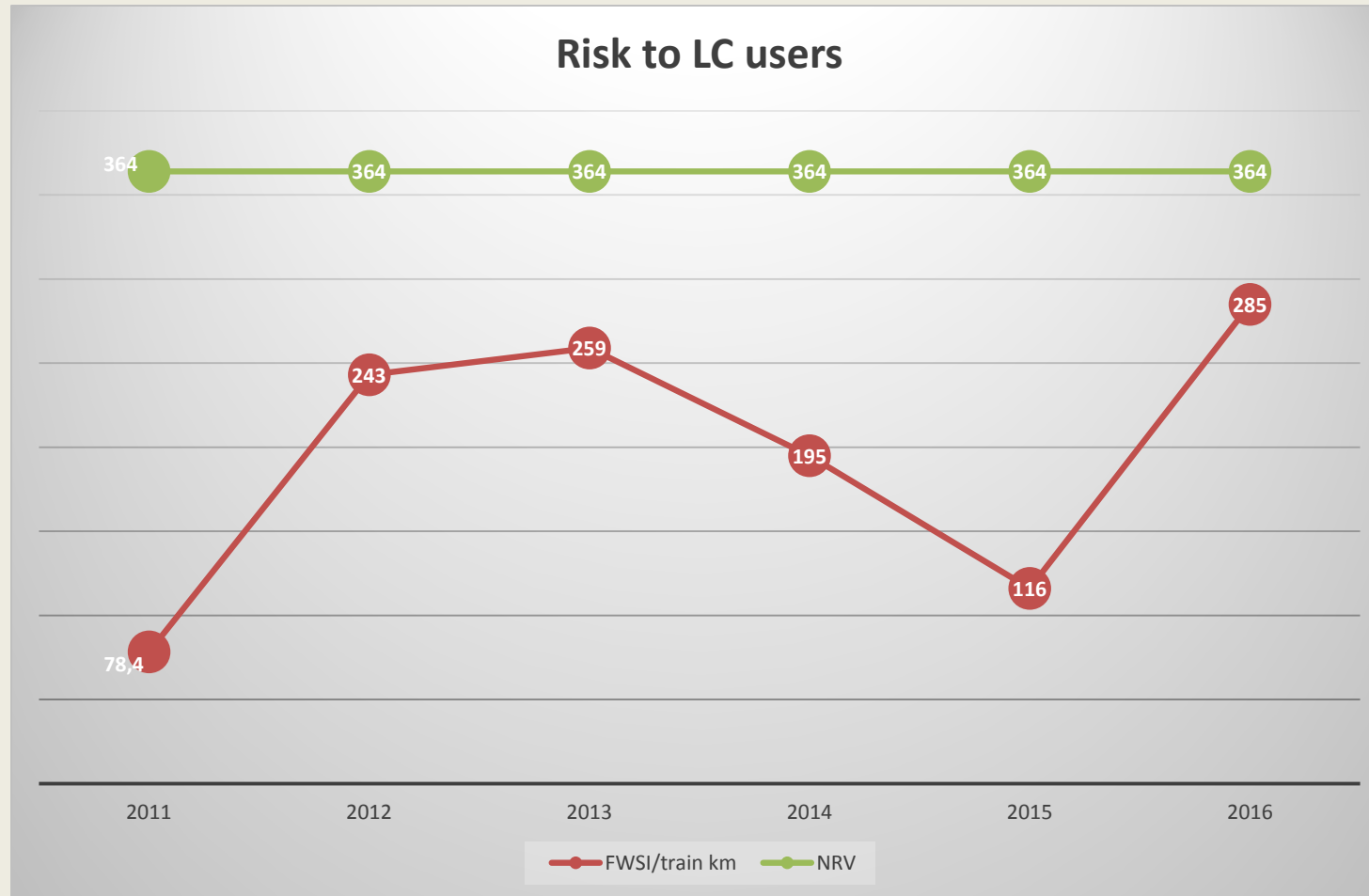
Risk to passengers



RAILWAY SAFETY IN SLOVENIA



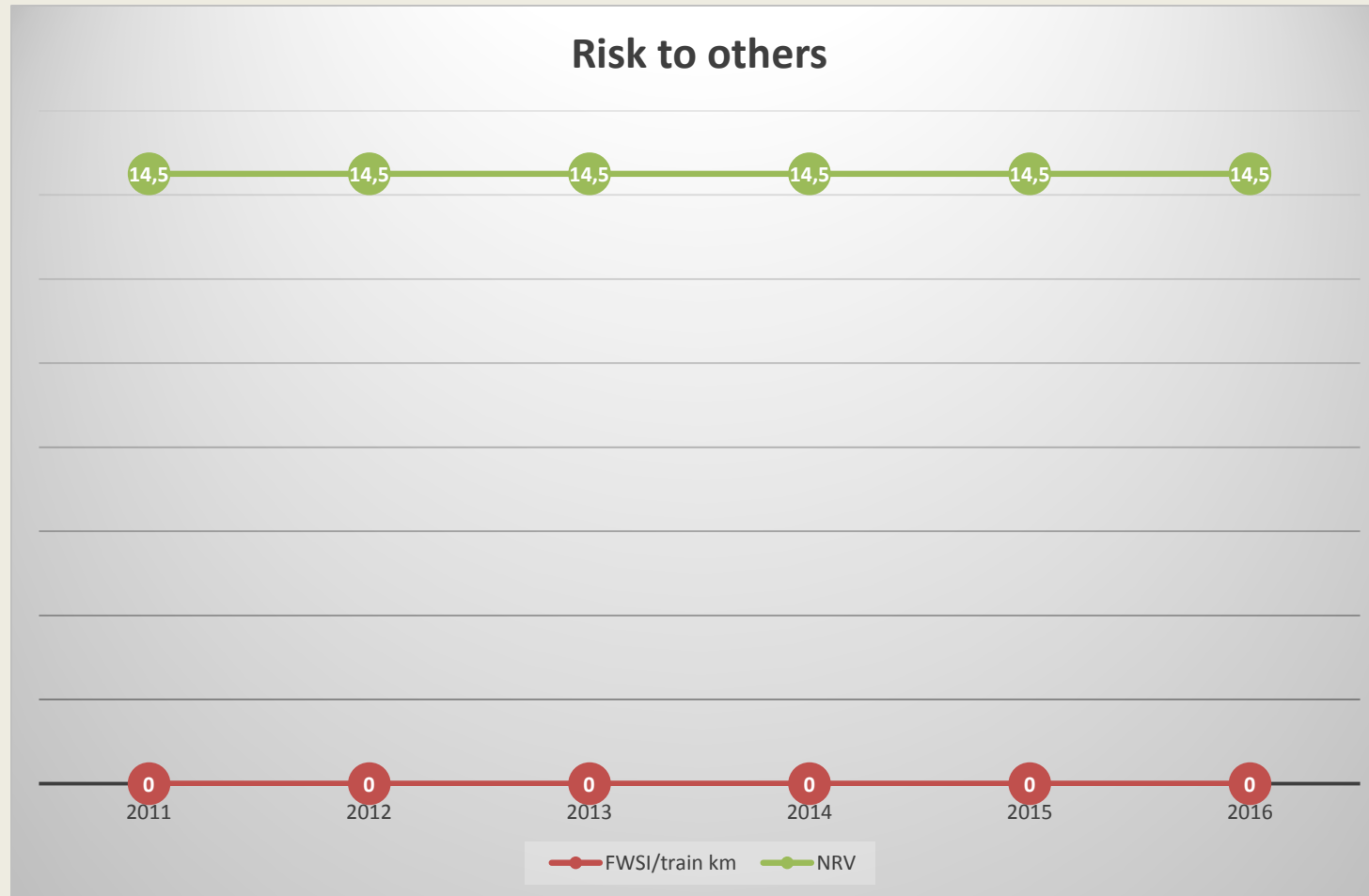
RAILWAY SAFETY IN SLOVENIA



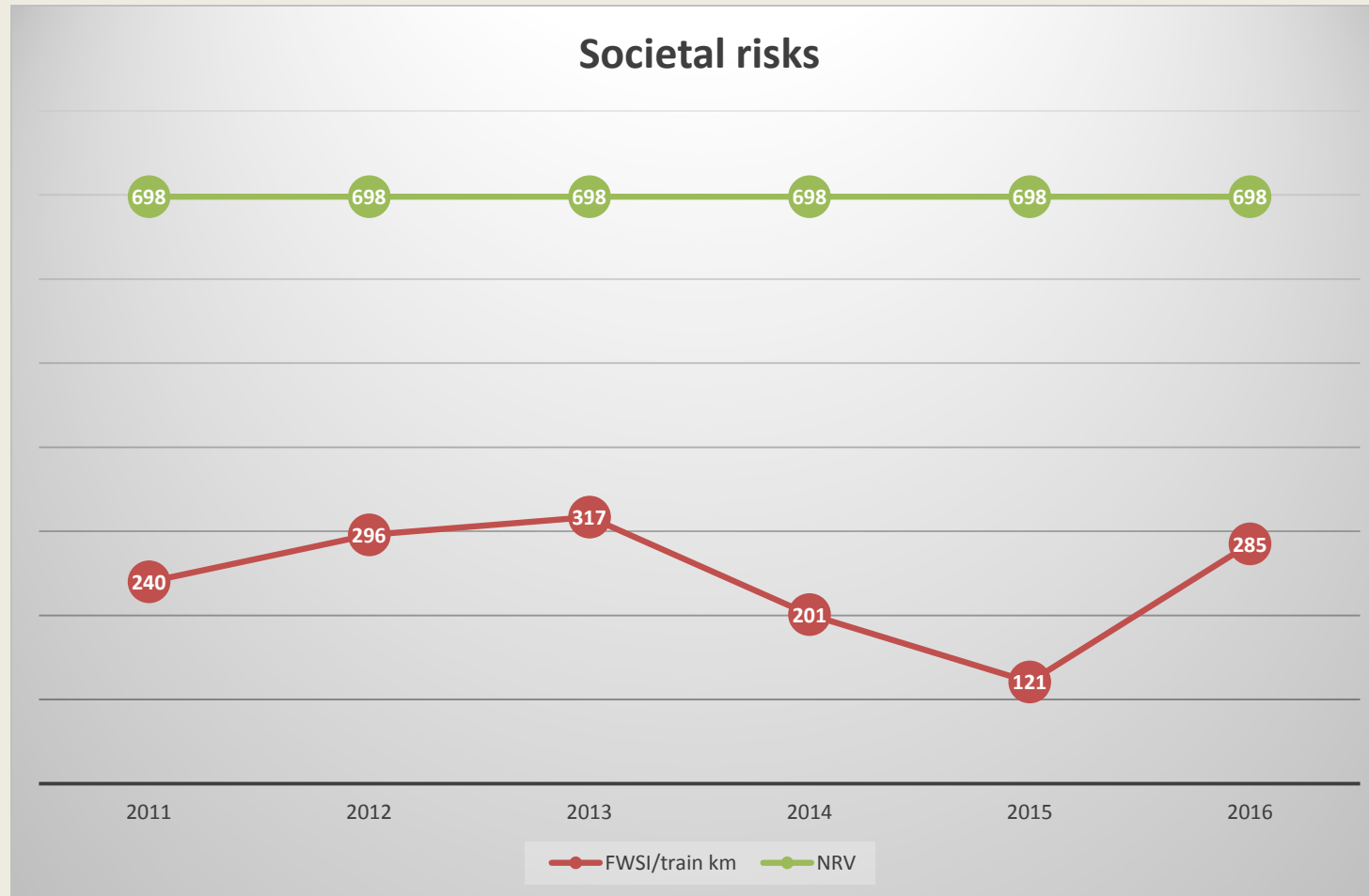
RAILWAY SAFETY IN SLOVENIA



RAILWAY SAFETY IN SLOVENIA

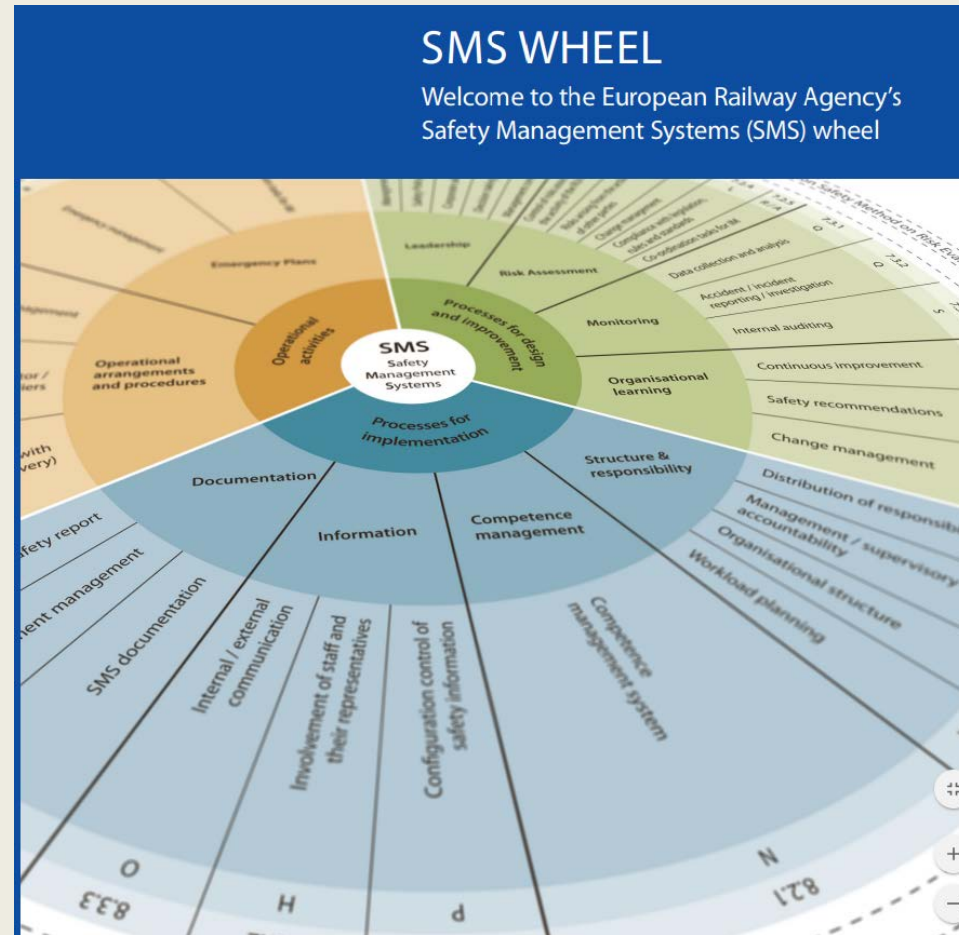


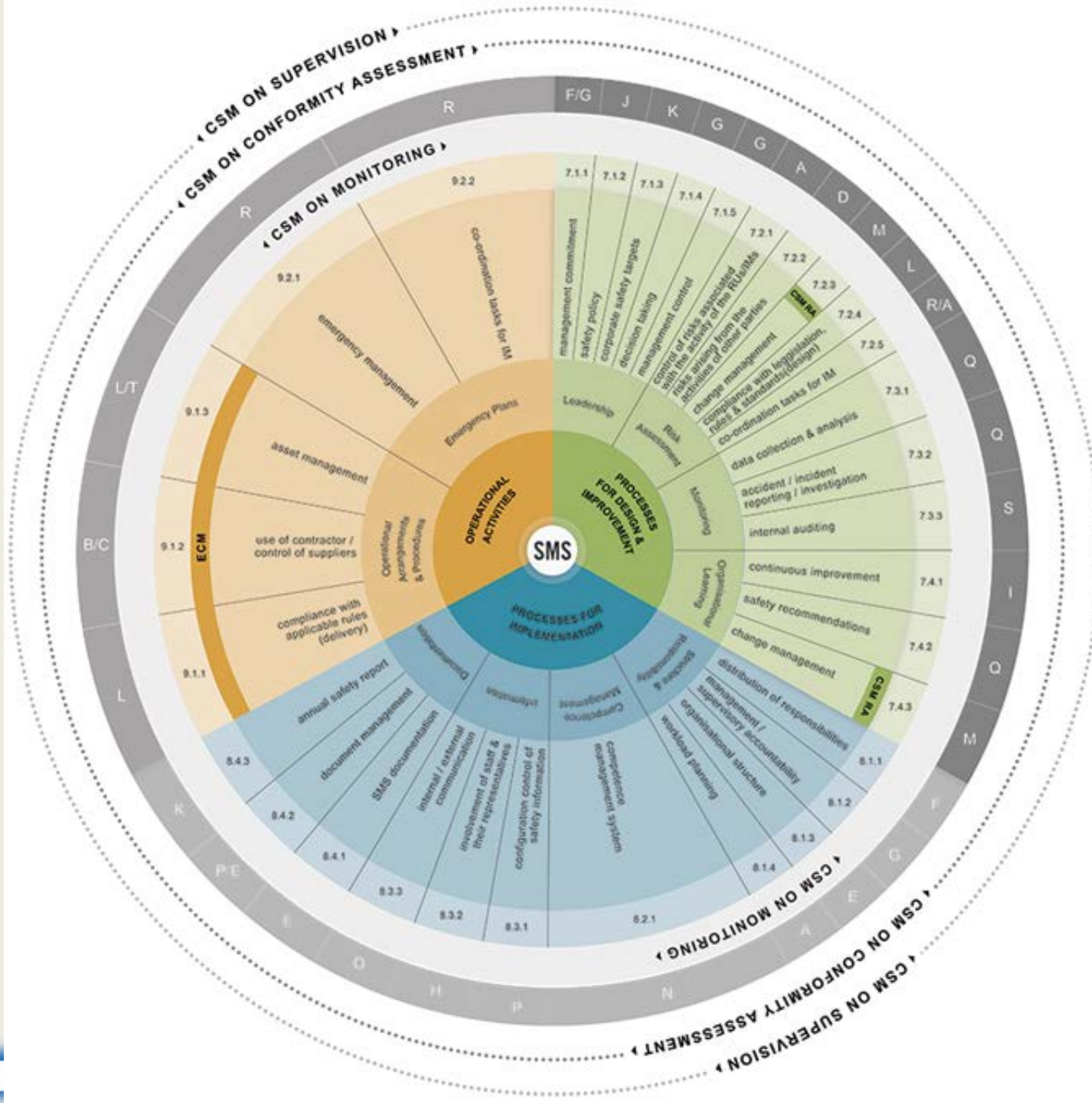
RAILWAY SAFETY IN SLOVENIA



SAFETY MANAGEMENT

SMS is the tool for managing safety which contributes to the effective design, planning, delivery and control of railway operation, as part of a company's business.





! Future challenges

- **Supervision plan**
- **Proactive collaboration with stakeholders**
- **Safety policy**
- **Reduction of accidents on the level crossings**

Thank you for attention

More information:

www.azp.si

gp.azp@azp.si

Data sources:

- Annual Safety Report – NSA Slovenia
- SŽ Infrastruktura
- SURS
- ERA

Josip Rotar,
Senior advisor at Safety division