

**TOURIST RECOMMENDATIONS**

# ILCAD 2024

5, 6, 7 June

Buenos Aires, Argentina



# What you need to know before arriving in Buenos Aires



13° C (55° F)



argentine peso (\$ARS)



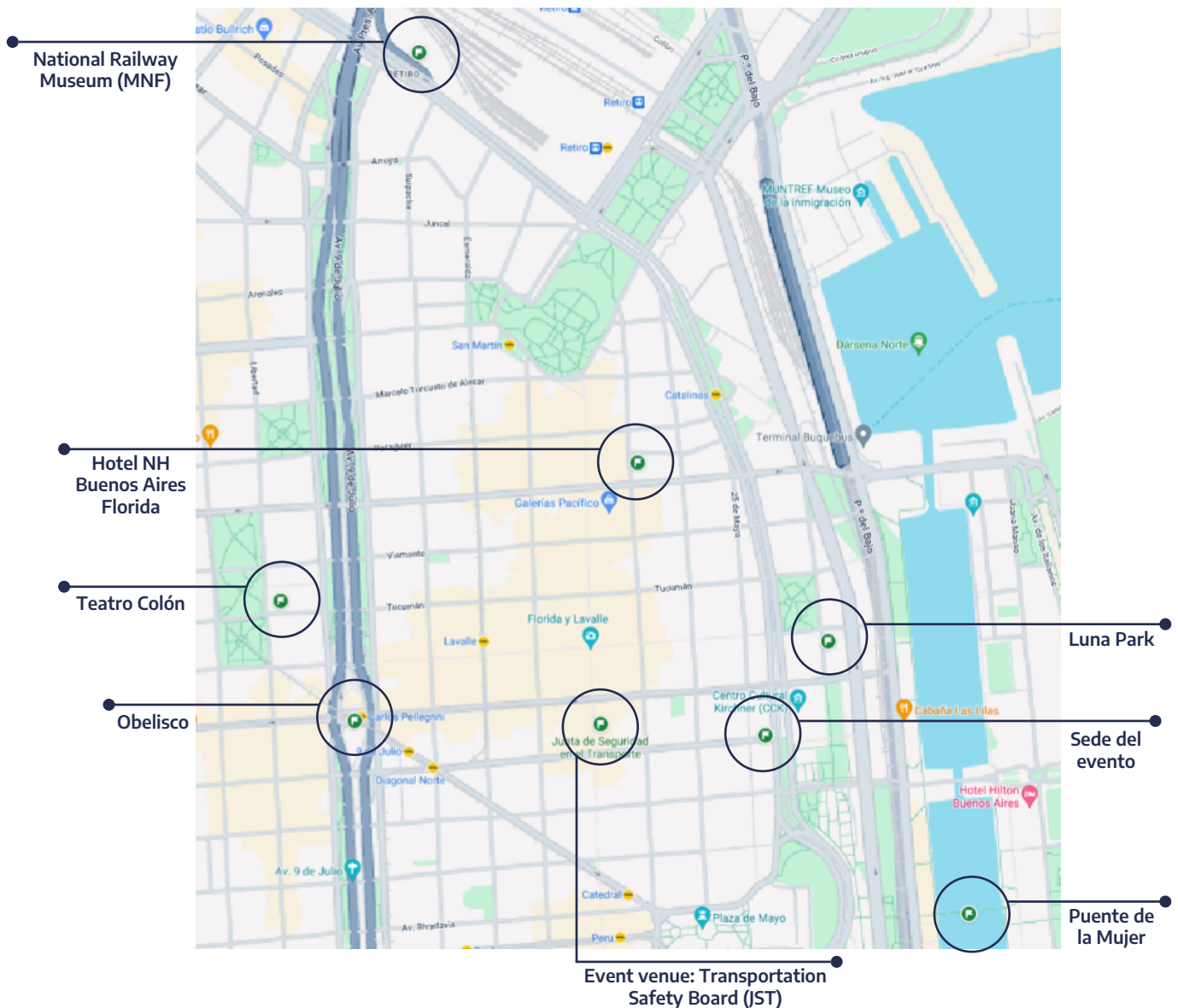
UTC / GMT -3 hours.



Voltage is 220 V.  
Frequency is 50 Hz.

Learn more about the weather, healthcare, currency, accessibility and safety in Buenos Aires:  
<https://turismo.buenosaires.gob.ar/es/agrupador-noticias/datos-%C3%BAtiles>

## Landmarks







## ARRIVAL IN BUENOS AIRES

The main accesses to the country by air are:

- **Aeropuerto Internacional Ministro Pistarini (EZE)**, located 35 kilometers southwest of the city of Buenos Aires. For more information, please visit: <https://www.aa2000.com.ar/ezeiza>
- **Aeropuerto Jorge Newbery**, located on Avenida Costanera. For more information, please visit: <https://www.aa2000.com.ar/aeroparque>



## TRANSPORTATION FROM THE AIRPORT

In both airports, you can choose different ways of transportation:

### Cabs at the International Airport Ministro Pistarini - Ezeiza

#### Remis Trans Air

Sector A > Arrivals > PB > International > Public Sector

#### Remis Manuel Tienda León

<https://www.tiendaleon.com>  
[informes@tiendaleon.com.ar](mailto:informes@tiendaleon.com.ar)

#### Remis Transfer Express

[reservas@transferexpress.com.ar](mailto:reservas@transferexpress.com.ar)

#### Remis Baires Transfer

[www.onbaires.com](http://www.onbaires.com)  
[reservasonline@onbaires.com](mailto:reservasonline@onbaires.com)



## A GUIDE ON YOUR CELL PHONE

To find your way around the streets of Buenos Aires, the best option is to download the **Cómo Llego** app for free. It will tell you which are the most convenient alternatives for each transfer.

You can also use **Google Maps**.



## LONG DISTANCE CALLS TO BUENOS AIRES

- Country code +54
- Calls to Buenos Aires from a landline: +54 11 + the provided number.
- Calls to Buenos Aires from a cell phone: +54 9 11 + the provided number.



## EMERGENCY PHONE LINES

- Tourist Police: (+54 9 11) 5050 3293 / 9260. Learn more.
- National Emergency Center: 911
- Medical emergencies: 107
- Civil defense: 103
- Environmental emergency: 105



## PUBLIC ROADS

### Considerations for sight-seeing or circulating on public roads:

During your stay in Argentina, it is suggested that you **keep your personal belongings safe** when traveling on public roads.

As every year, on June 3, the mobilization for **Ni Una Menos** will take place in the square of Congreso de la Nación and surroundings. Please note that there will be large crowds of people gathered and some street blockades in the area.

## Places you can visit in Buenos Aires

### Suggestions for each day

The Autonomous City of Buenos Aires has a wide range of activities and tourist proposals. Here is a list of all the ones we consider you cannot miss when visiting the city. <https://turismo.buenosaires.gob.ar>.



## TOUR BUSES

### Gray Line Argentina

<https://graylineargentina.com> (offers a more extensive tour)

### Buenos Aires Bus

<https://buenosairesbus.com>



## TOURIST ATTRACTIONS

In the following site you will be able to consult all the guided tours, experiences, walks and tours. In the search engine you can filter the activities according to price range and day of the week. <https://turismo.buenosaires.gob.ar/es/que-hacer-en-la-ciudad>

You will also find outstanding activities and proposals, from outdoor walks and green spaces to special events, festivals, shows, plays or fairs. <https://turismo.buenosaires.gob.ar/es/article/que-hacer-esta-semana>



## RESTAURANTS (near the event)

### Michelangelo Legend

Location: Balcarce Entre Avenida Belgrano Y Balcarce, CABA. / Tel: +54 11 2516-8222

### Restaurant Estilo Campo

Location: Alicia M. de Justo 1840 Puerto Madero, CABA. / Tel: +54 11 43124546

### Cabaña Las lilas: Classic Grill

Location: Av. Alicia Moreau de Justo 516 CABA / Tel: + 54 1143131336

### Il Fiume Ristorantino: Italian Food

Location: Olga Cossettini 1651 CABA / Tel: +54 1157873097

### Cucina D'Onore

Location: Alicia Moreau de Justo 1768 Puerto Madero, CABA. Tel: + 54 11 4315-9260.

### Pizzería Güerrin

Location: Av. Corrientes 1368, C1043 Cdad. Autónoma de Buenos Aires



## NOTABLE PUBS

### The New Brighton

Location: Sarmiento 645, CABA / Tel: +54 11 5914 3425.

### Gran Café Tortoni

Location: Av. de Mayo 825 CABA / Tel: +54 9 11 2392-6410

### Bar del Hotel Claridge

Location: Tucumán 535, CABA / Tel: 4314 7700.

### Confitería La Ideal

Location: Suipacha 384, CABA / Tel: 4328 7750

### Confitería Croque Madame Palacio Paz

Location: Av. Sta. Fe 750, CABA / Tel: 5934-4555



## WINE CELLARS

### Che Malbec

Location: Av. de Mayo 777, CABA.

### GO BAR

Location: Av. Corrientes 336, CABA.



## CHOCOLATE SHOPS

### Rapa Nui Plaza San Martín

Location: Av. Santa Fe 772, CABA.

### Abuela Goye Galerías Pacífico

Location: Av. Córdoba 550 / Florida 753, CABA.



### **Teatro Colón**

Location: Tucumán 1171, CABA.

The Teatro Colón is one of the must-see opera houses in the world of opera and is on a par with La Scala in Milan, the Opera Garnier in Paris and the Royal Opera House in London.



### **Usina del Arte**

Location: Agustín R. Caffarena 1, C1157 CABA.

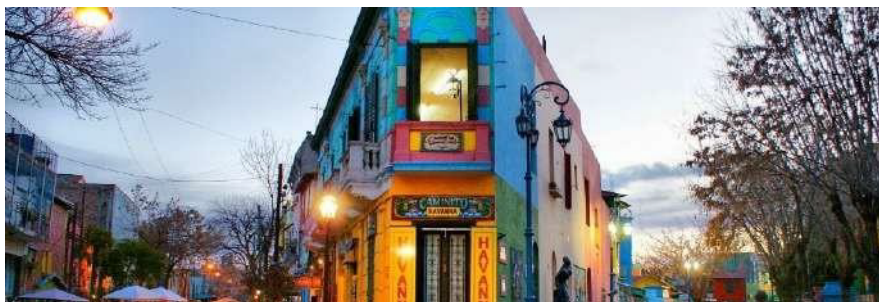
Usina del Arte is a cultural center and performance venue that occupies the old Usina Don Pedro de Mendoza building in the neighborhood of La Boca.



### **Calle Museo Caminito**

Location: Valle Dr. Iberlucea y Magallanes, CABA.

Caminito is one of the most emblematic walks in the city, a must-see attraction for those who visit it. With its colorfully painted sheet metal tenements, it is also an open-air museum almost 150 meters long.





### **Boca Juniors Stadium, La Bombonera**

Location: Brandsen 805, C1161 CABA.

For football fans, no trip to BA is complete without visiting the Bombonera stadium, or Estadio Alberto J. Armando, as it's officially called, home to Maradona's beloved Boca Juniors and often considered the stadium with the most intense, passionate atmosphere in the world. It is not a spectacle that takes place only inside the stadium, but the streets of the neighborhood start to throb with excitement even hours before the match begins.



### **De la Ribera Theater**

Location: Av. Don Pedro de Mendoza 1821, CABA.

De la Ribera Theater, facing the Riachuelo and in the heart of La Boca neighborhood, is striking for its picturesque style that replicates the architecture and colors of the houses in the neighborhood.



### **Recoleta Cultural Center**

Location: Junín 1930, CABA.

The Recoleta Cultural Center has 27 exhibition halls, a micro-cinema, an auditorium and an amphitheater. Numerous activities take place there: plastic arts exhibitions, recitals, concerts, theatrical performances and events.







### **Museum of Latin American Art MALBA**

Location: Av. Figueroa Alcorta 3415, CABA.

MALBA is one of the most interesting museums in the city: it houses the art collection of the Costantini Foundation, with approximately 400 works of art (paintings, sculptures, engravings, photographs and objects) of great Latin American artists of the twentieth century.



### **National Museum of Fine Arts**

Location: Av. Del Libertador 1473, CABA.

The National Museum of Fine Arts is one of the most important public art institutions in Argentina. It houses an extremely diverse patrimony, which includes more than 12,000 pieces, including paintings, sculptures, drawings, engravings, textiles and objects.



### **Immigration Museum - MUNTREF**

Location: Av. Antártida Argentina 1355, Puerto Madero, CABA.

The Hotel de los Inmigrantes, which operated as such between 1911 and 1953, is where the memory and history of the immigrants who arrived in Argentina from Europe, Asia and Africa in the 19th century is kept alive. The hotel houses the Immigration Museum, created in 1974, and the Contemporary Art Center.







### **Borges Cultural Center**

Location: Viamonte 525, CABA.

The cultural center is a space dedicated to the arts inside the Galerías Pacífico shopping mall.



### **San Telmo Market**

Location: Defensa 963, C1066AAQ CABA

The San Telmo Market is a large indoor market located in the neighborhood of San Telmo. It preserves old gastronomic stores and, nowadays, antique shops abound.



### **Paseo Tigre**

Location: Tigre, Provincia de Buenos Aires.

Only 30 km from Buenos Aires you can visit Tigre. You can navigate through its rivers and streams, enjoy the vegetation and appreciate the island constructions through Delta Tours. You can also visit the Puerto de Frutos, the Paseo Victorica and the Museo de Arte Tigre (MAT) which was the headquarters of the old Tigre Club.

**How to arrive:**

- By boat, navigating the Río de la Plata and the Delta.
- By transfers: Sturla Viaje / Viator.
- By Mitre Train: Branch Retiro – Tigre (You will need the SUBE card).

## Our recommendations in Argentina

To get to the beautiful and diverse Argentine provinces, we recommend flying from Buenos Aires airport (Aeroparque - AEP). Argentina has very large geographical distances and is the best method of transportation to save time. If you wish, you can later rent a car or take excursions in other modes once you arrive at your chosen destination.



OUR

RECOMMENDATIONS

### Tren de las nubes (Train of the clouds)

Location: Province of Salta.

How to buy the tickets: [https://trenalasnubes.com.ar:8443/tan/servlet/paso\\_01](https://trenalasnubes.com.ar:8443/tan/servlet/paso_01)

The province of Salta is two hours away from Buenos Aires by plane.



### San Carlos de Bariloche

Location: Province of Rio Negro

Bariloche is two hours away from Buenos Aires by plane.



### Perito Moreno Glacier

Location: Province of Santa Cruz

The Perito Moreno Glacier is located three hours from Buenos Aires by plane, where you can also visit El Calafate.





**OUR  
RECOMMENDATIONS**

**Wine route of Mendoza**

Location: Province of Mendoza

The province of Mendoza is located two hours away from Buenos Aires by plane, where you can visit the most important wineries in Argentina.

For more information about tours in Argentina visit: <https://www.argentina.travel/en>





# ILCAD 2024

5, 6, 7 June

Buenos Aires, Argentina



TOURIST RECOMMENDATIONS

**JST** | SEGURIDAD EN  
EL TRANSPORTE

**ILCAD**  
Act safely at level crossings

**TreSPAD**  
Tracks are for trains